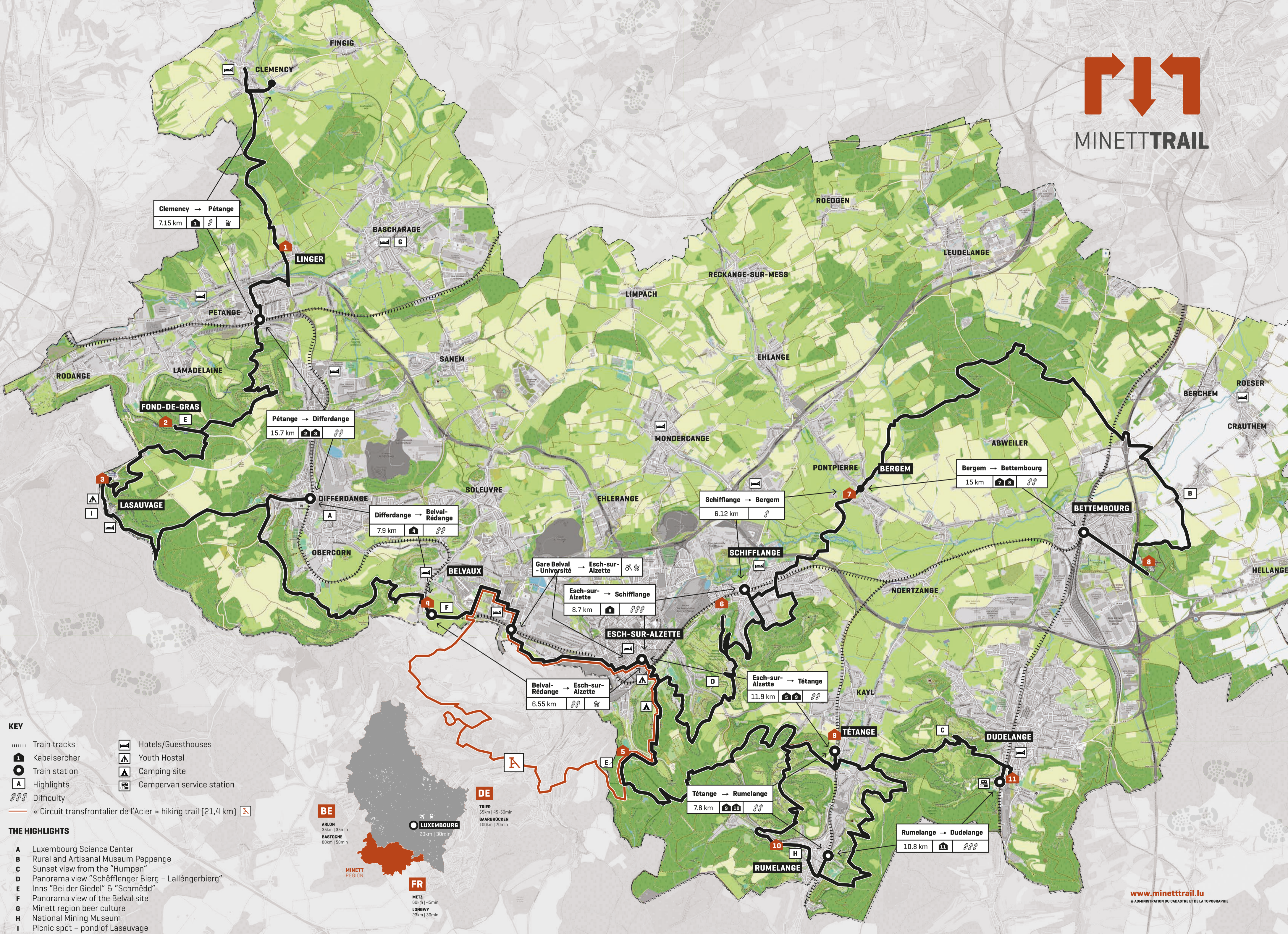




MINETTTRAIL



Clemency → Pétange
7.15 km [Icons: house, wheelchair, dog]

Pétange → Differdange
15.7 km [Icons: house, wheelchair, dog]

Differdange → Belval-Rédange
7.9 km [Icons: house, wheelchair, dog]

Gare Belval-Université → Esch-sur-Alzette
Esch-sur-Alzette → Schifflange
8.7 km [Icons: house, wheelchair, dog]

Belval-Rédange → Esch-sur-Alzette
6.55 km [Icons: wheelchair, dog]

Schifflange → Bergem
6.12 km [Icons: wheelchair, dog]

Bergem → Bettembourg
15 km [Icons: wheelchair, dog]

Esch-sur-Alzette → Tétange
11.9 km [Icons: wheelchair, dog]

Tétange → Rumelange
7.8 km [Icons: wheelchair, dog]

Rumelange → Dudelange
10.8 km [Icons: house, wheelchair, dog]

- KEY**
- Train tracks
 - Hotels/Guesthouses
 - Kabaisercher
 - Train station
 - Highlights
 - Difficulty
 - Youth Hostel
 - Camping site
 - Campervan service station
 - « Circuit transfrontalier de l'Acier » hiking trail [21,4 km]

- THE HIGHLIGHTS**
- A** Luxembourg Science Center
 - B** Rural and Artisanal Museum Peppange
 - C** Sunset view from the "Humpen"
 - D** Panorama view "Schëfflenger Bierg - Lalléngerbierg"
 - E** Inns "Bei der Giedel" & "Schmëdd"
 - F** Panorama view of the Belval site
 - G** Minett region beer culture
 - H** National Mining Museum
 - I** Picnic spot - pond of Lasauvage

BE
ARLON 35km | 35min
BASTOGNE 80km | 50min

DE
TRIER 65km | 45-50min
SAARBRÜCKEN 100km | 70min

FR
METZ 60km | 45min
LONGWY 29km | 30min

LUXEMBOURG
20km | 30min

MINETT REGION



MINETTTRAIL KABAISERCHER

An intricate concept was developed to satisfy all of your overnight staying needs!

Starting in the year 2022, eleven extraordinary lodges called "Kabaisercher" await you along the way of the trail and welcome you to stay the night and kick up your feet.

These lodges have been designed by eleven different architects and consist of newly renovated buildings that previously played a big part in the industrial or cultural heritage of the region. So you can look forward to your luxury stay in a former weighing station or a fairy-tale castle...



SAFE TRIPS

Planning and preparation

Please plan your trip according to your own skills in order for you to fully enjoy the Minett Trail. For your own safety, it's wise to consider the following rules:

- Tell someone you know about your planned trip and routes
- Think about bringing a first aid kit
- Stay on the labelled trails
- Respect private and public property and stay off restricted areas
- Watch out for possible deviations or track restrictions
- Watch out for other people on the trail: Mountainbikers, other hikers
- Be respectful of nature and don't leave any waste behind
- Keep out of areas currently used by a hunt.
- Keep your dog on a leash
- Never start a fire
- Don't set up camp in the wilderness

Remember to take regular breaks. Hiking should be an indulgence and you're allowed to rest and enjoy the view every once in a while!



MINETTTRAIL



1 Lënger Schoul

- 📍 Linger
- 🛏 x9
- 📶 🅐



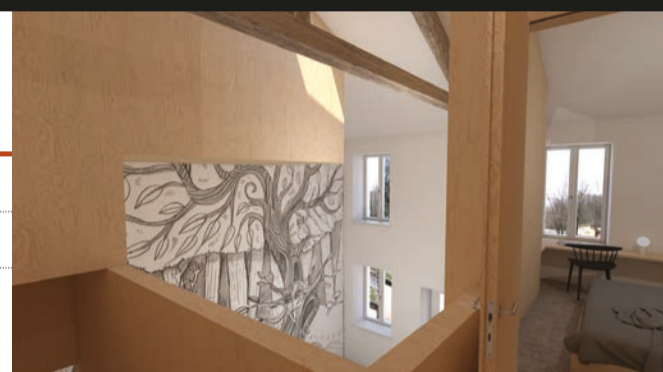
2 Wagon Fond-de-Gras

- 📍 Fond-de-Gras
- 🛏 x6
- 📶 🅐



3 La Sauvage

- 📍 Lasauvage
- 🛏 x8
- 📶 🅐



4 Gîte Bieles Réideng

- 📍 Belvaux
- 🛏 x12
- 📶 🅐 ♿



5 Pump it up!

- 📍 Esch-sur-Alzette
- 🛏 x6
- 📶 🅐



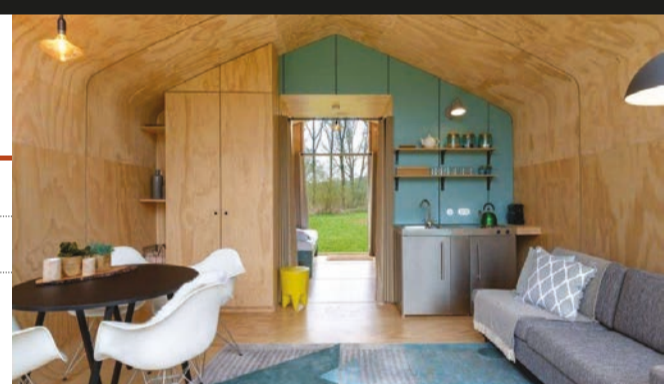
6 Waasserbaséng

- 📍 Schiffflange
- 🛏 x8
- 📶 🅐
- opens 2023



7 Biergamer Kabaisercher

- 📍 Bergem
- 🛏 x9
- 📶 🅐



8 Parc Merveilleux Reenert

- 📍 Bettembourg
- 🛏 x4
- 📶 🅐 ♿



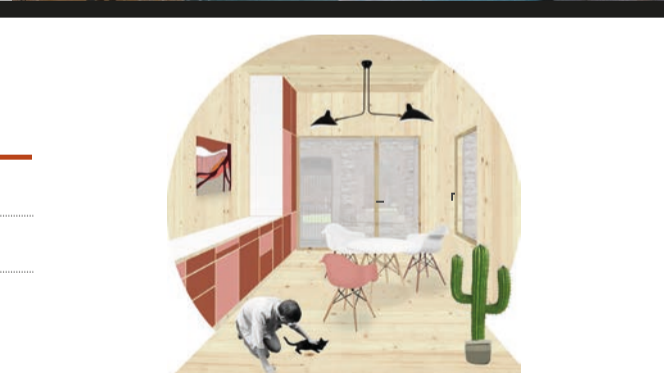
9 Den Alen Arbed's Büro

- 📍 Tétange
- 🛏 x6
- 📶



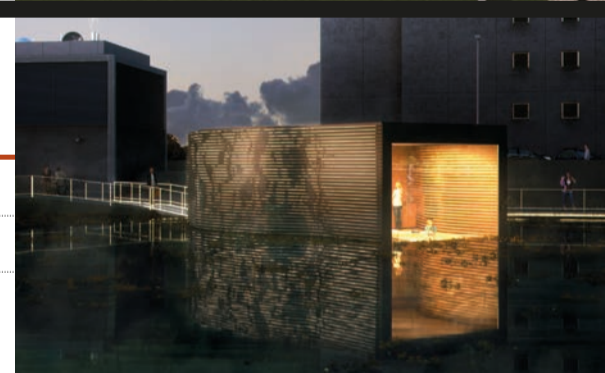
10 Haus Gonner

- 📍 Rumelange
- 🛏 x8
- 📶 🅐



11 Floater

- 📍 Dudelange
- 🛏 x4
- 📶 🅐



WELCOME TO THE MINETT REGION

"De Minett", as the region to the south of Luxembourg is called, takes its name from the distinct red color of its iron ore that once dominated the area and still influences it to this day.

This ore and its exploitation was paramount to the rapid industrial and financial revolution of the Grand Duchy in the middle of the 19th century. Open pit mining areas and deep underground tunnels were strewn throughout the region until the last operations ceased in 1981.

These wide areas were then left to develop on their own. Nature took over and revitalized these deeply changed landscapes into fresh new nature reserves, teeming with life. Over these years, incredible new areas developed which are host to many diverse, extraordinary species - truly an exceptional landscape, which is why the entire region was recognized and integrated into the "Man and the Biosphere" reserve program of the United Nations Educational, Scientific and Cultural Organization. From October of 2020 on, it can be called "Minett UNESCO Biosphere".

DIFFICULTY

Easy

These Trails are perfect for beginners and families with small kids. The different segments aren't completely accessible for people with reduced mobility, but they are easy to walk. Details about barrier-free segments can be found in the individual sections on the website or in the brochure.

Medium

These medium difficulty segments are ideal for occasional hikers. An average fitness level is sufficient enough to tackle these trails, but keep in mind: some routes can contain narrow segments of tracks or pass through stairs.

Challenging

A high fitness level and solid, grippy trekking shoes would be a great idea if you want to attack these trails. In return, they reward you with a great experience. None of the trails require you to secure yourself to pass any dangerous drops.

Accessible & stroller-friendly

The Minett Trail is not entirely barrier-free, but some sections are accessible to people with reduced mobility and families with strollers. Details can be found at the individual sections on the website or in the brochure.

Hiking with your dog

Hiking with your dog is allowed, but dogs always need to be on a leash during your adventures in the nature reserves. These reserves are a habitat to many protected species like the wood lark, a ground-breeding bird that's using the dry grass areas as a breeding ground and cannot be disturbed during the breeding season. The nature reserves also play host to sheep and goat herds.

EUROPEAN CAPITAL OF CULTURE 2022

In 2022, together with 10 other municipalities, and 8 municipalities in France, in the Communauté de Communes Pays Haut Val l'Alzette (CCPHVA), Esch-Alzette, will be European Capital of Culture.

Starting from the 22.02.2022 a wide variety of cultural exhibitions will be on offer throughout the region and alongside the Minett Trail

Program: www.esch2022.lu



MAPS AND OTHER USEFUL MATERIAL

Geoportail

You can find and download the entirety of the trail in the maps section of the Geoportail via www.geoportail.lu. Our Website www.minetttrail.lu contains all sections as a GPX/KML as well as a pdf file download



Track restrictions and rerouting

The online platform tourisme.geoportail.lu contains all the current restrictions and redirections. You can also find all current information about any potential hunts in the area during hunting season. We are working hard to keep the information as up to date as possible but cannot guarantee perfect accuracy

GUIDED HIKING TOURS

Guided hiking tours of the Minett Trail can be arranged at the online shop via www.minetttrail.lu. They are offered in four languages: GER, FR, LU, EN

If you want to book your very own and individual guided hike, please contact us directly at info@visitminett.lu

ARRIVAL

BY PUBLIC TRANSPORT

Plan your trip and arrival by bus or train with the mobility central www.mobiliteit.lu. Public transport in Luxembourg is free of charge for everybody

BY CAR

From Luxembourg-City via motorway: A3 or A4. The Motorway A13 traverses the entire Minett region, starting from the Belgian border at Pétange and until Frisange at the French border

STAY & MORE

www.visitminett.lu

CONTACT

✉ info@visitminett.lu

☎ +352 2754 5991 MO-FR



www.minetttrail.lu